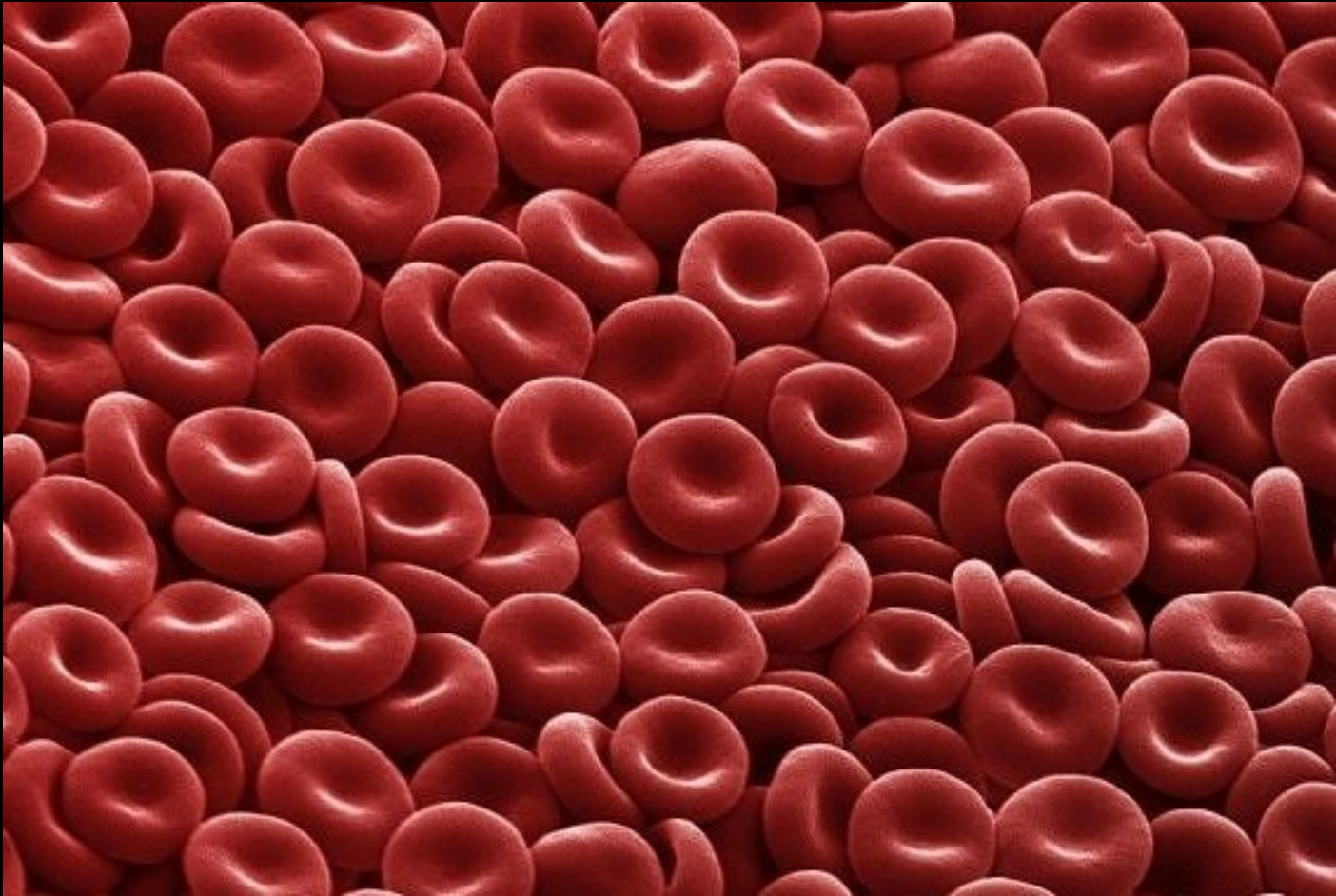


# Globuli rossi



<http://www.photosfan.com/images/microscopic-images-from-inside-hte-human-body-red-1.jpg>

# Cellule del sangue

## Blood Cells



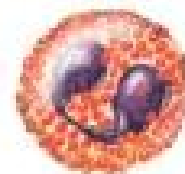
Monocyte



Lymphocyte



Neutrophil



Eosinophil



Basophil



Macrophage



Erythrocyte

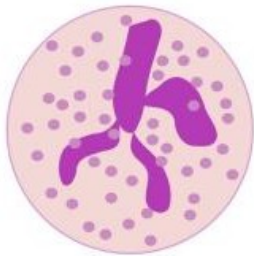


Platelets

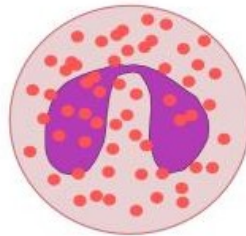
© 2007 Terese Winslow  
U.S. Govt. has certain rights.

Globuli bianchi

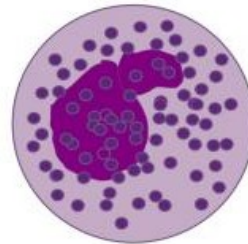
# White blood cells



neutrophil



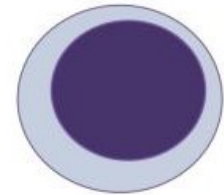
eosinophil



basophil



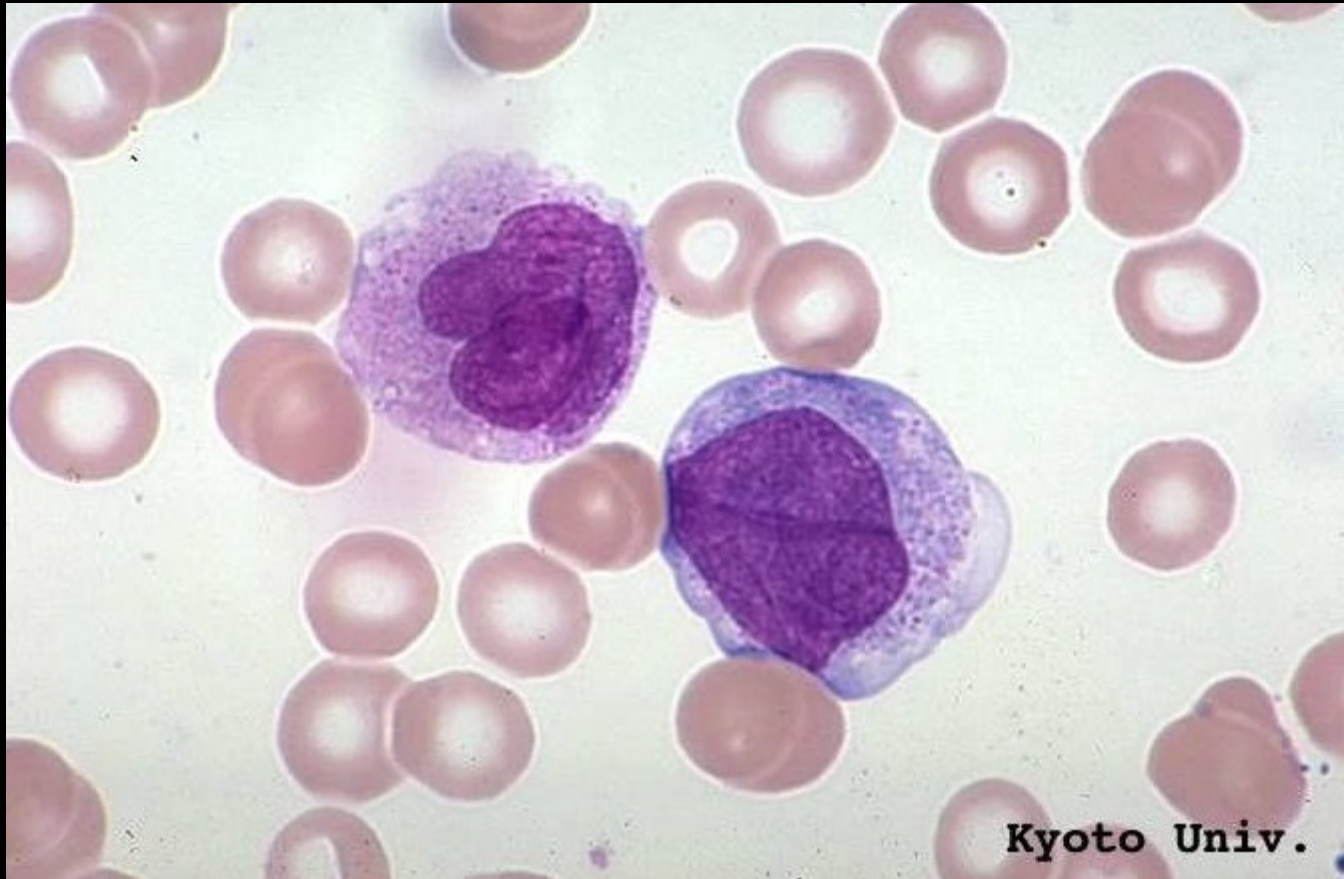
monocyte



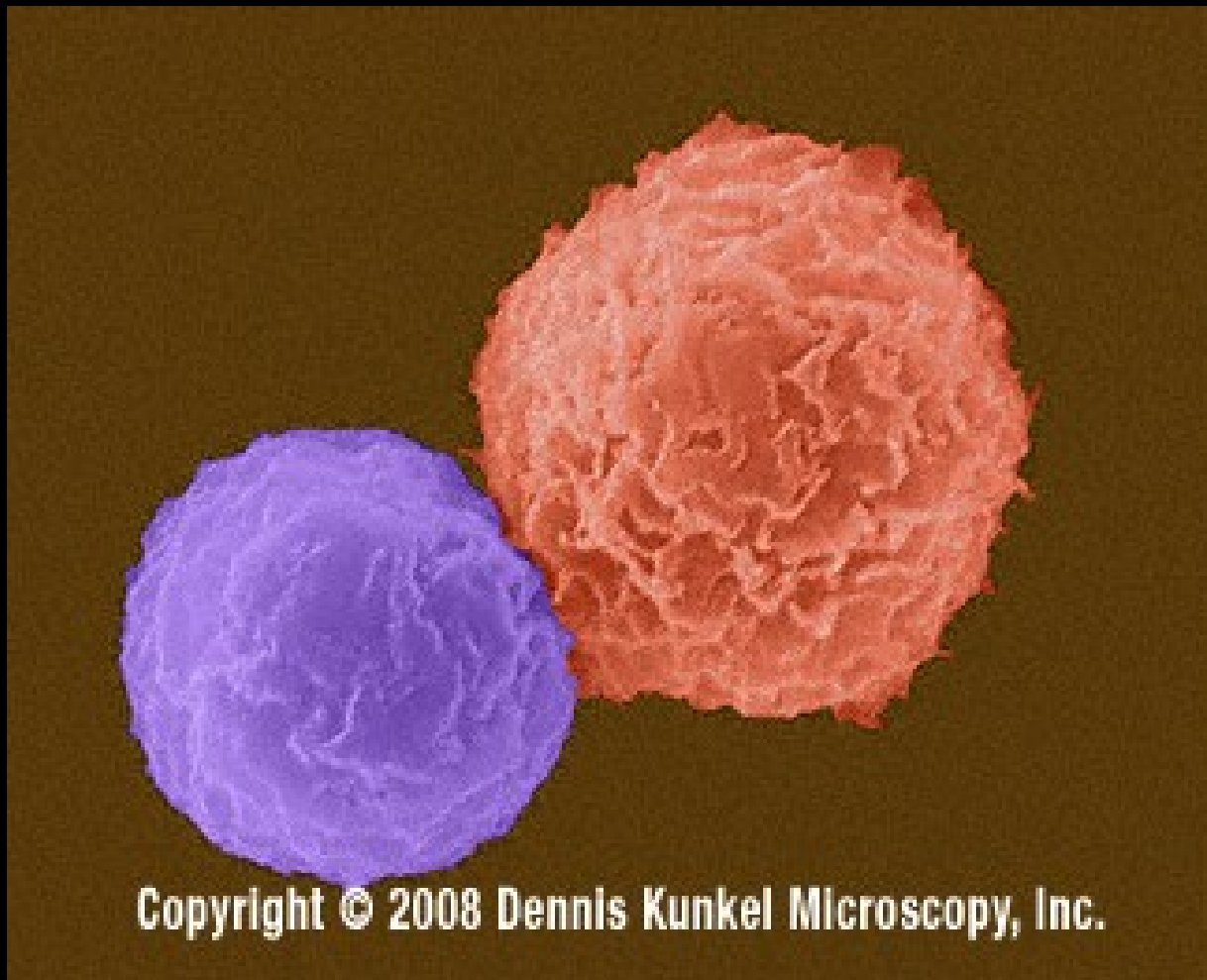
lymphocyte

wiseGEEK

# Monociti



# Linfociti B e T

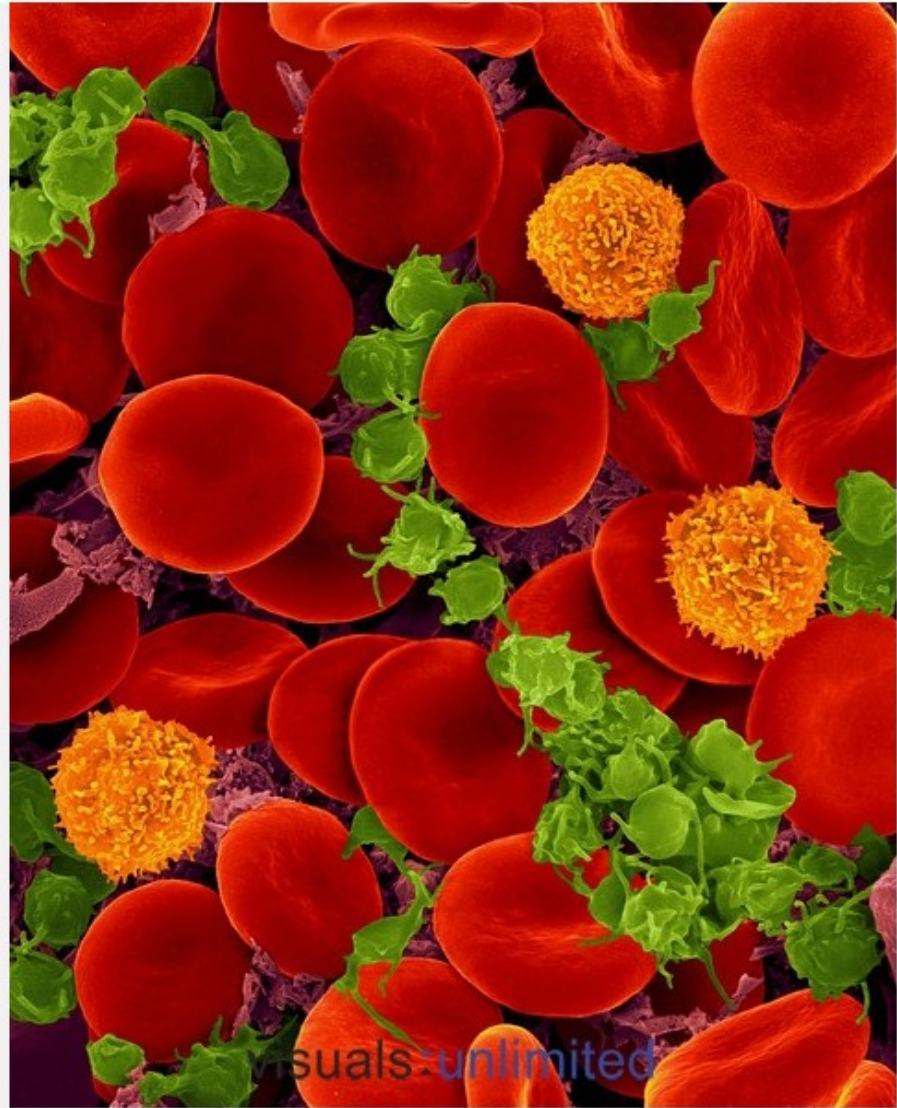




Globuli rossi

Linfociti T

Piastrine



Human blood with red blood cells, 3 T-lymphocytes, and activated platelets. Dennis Kunkel Microscopy, Inc/Visuals Unlimited, Inc.