

## I MOLLUSCHI

- Corpo **molle**
- **Acquatici e terrestri**
- Corpo organizzato in un **piede**, un **capo**, il **sacco dei visceri** e la **conchiglia**
- Esempi: **chioccioline, vongole e seppie.**

### GASTEROPODI



<http://www.kollant.it/pages/images/gasteropodi.jpg>

### BIVALVI



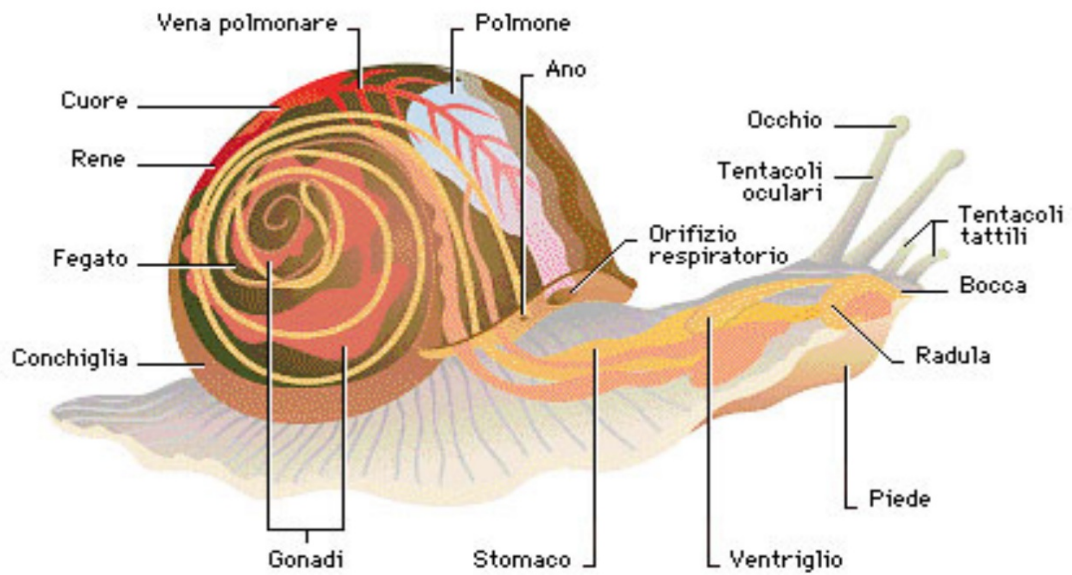
<http://www.mille-animali.com/images/animali/bivalvi-2.jpg>

### CEFALOPODI



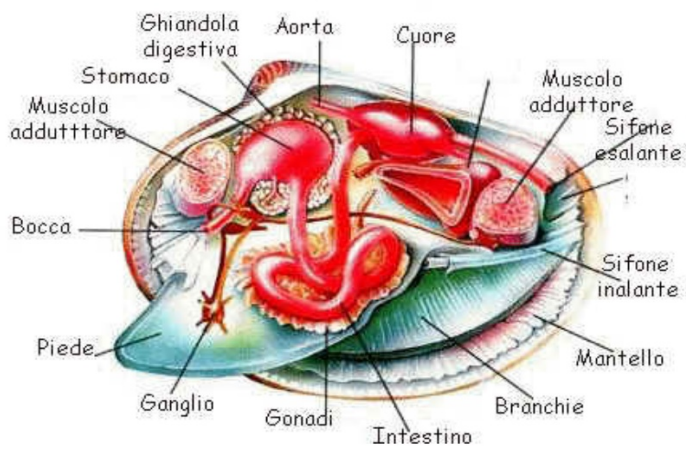
<http://www.nautica.it/scubaweb/biologia/cefalopodi.jpg>

## I MOLLUSCHI

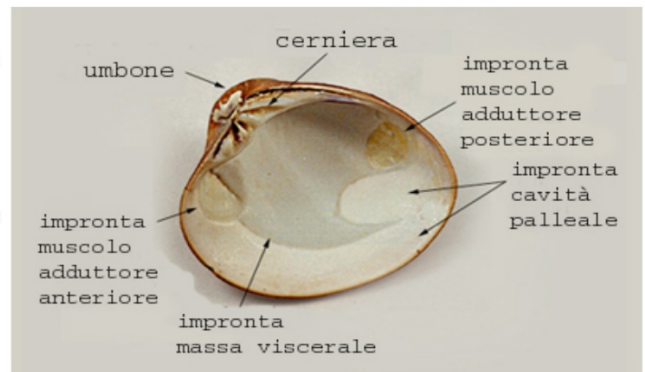


<http://www.acquadvetro.com/immagini/Anatomia.jpg>

## I MOLLUSCHI

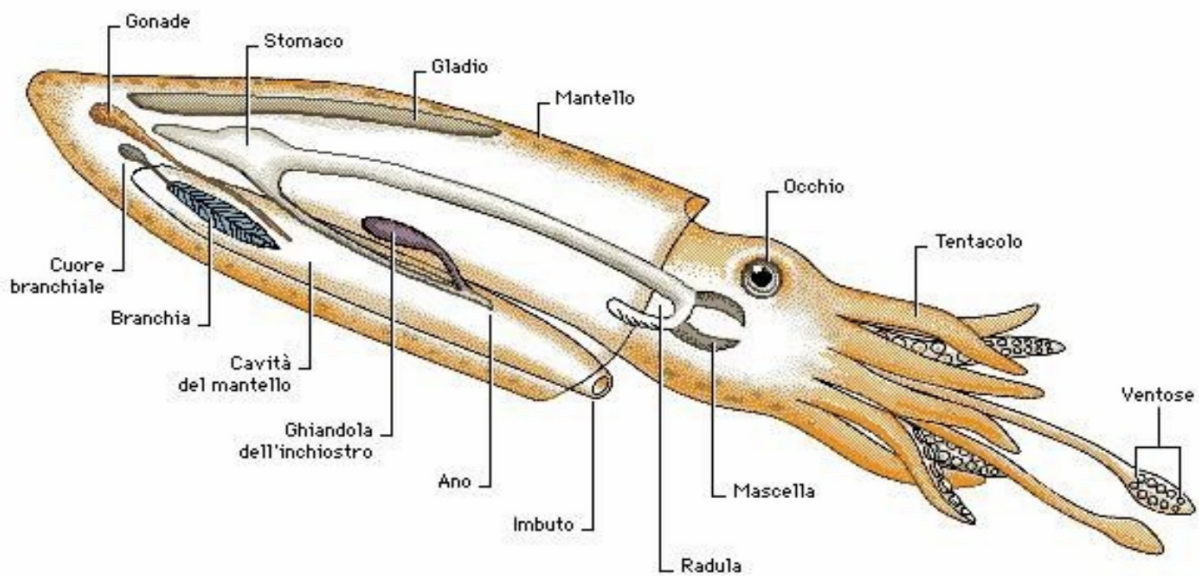


<http://omodeo.anisn.it/omodeo/images/bivalv4.jpg>



<http://terrym.interfree.it/muscle.jpg>

## I MOLLUSCHI



<http://mediabarcellona.files.wordpress.com/2008/09/calamaro.jpg>

## GASTEROPODI



- Camminano sul ventre
- La conchiglia ha, in genere, un solo pezzo
- Non hanno simmetria bilaterale
- Esempi: chioccioline e lumache



<http://2.bp.blogspot.com/-soVcrZzunJE/TbkPa07LFFI/AAAAAAAAAuU/a2WJH24thKQ/s1600/17.JPG>  
[http://4.bp.blogspot.com/\\_95SOK6Cvcko/RfpQ8w0UweI/AAAAAAAAAbY/1UevSWBM8AQ/s320/bio\\_gastropoda.jpg](http://4.bp.blogspot.com/_95SOK6Cvcko/RfpQ8w0UweI/AAAAAAAAAbY/1UevSWBM8AQ/s320/bio_gastropoda.jpg)  
<http://www.taxateca.com/images/dominioeukaryota/reinoanimalia/filomollusca/gastropoda.jpg>  
<http://www.critterzone.com/animal-pictures-nature/stock-photos/Snail-Gastropoda-AWIN091808-041.jpg>



## BIVALVI

- Conchiglia formata da due valve con cerniera azionata da muscoli
- Produttori di perle
- Esempi: vongole e mitili



<http://www.perla.tw/images/perles-eau-douce/ED-COULEUR-GP-VRAC.jpg>  
<http://a21.idata.ov-er-blog.com/450x407/3/35/32/25/Culture-perle.jpg>  
<http://www.mozo.olab.net/immagini/bivalvi.jpg>  
<http://www.sunmagalicana.it/lessico/S/Santiago%20Pecten%20irradians.jpg>  
<http://www.gprmeneghin.com/schede/sistematica/img/mollusch/bivalvi.jpg>

## CEFALOPODI

- Animali che camminano sulla testa
- Piede vicino alla testa, suddiviso in tentacoli con ventose
- Capo con becco per frantumare i cibi
- In alcuni casi la conchiglia è interna (osso di seppia), in altri è assente come il polpo
- Esempi: calamari, polpi, seppie, nautili



<http://www.ara21.org/ara21.jpg/animali/nautilus.jpg>  
[http://www.buonissimo.org/images/rubriche\\_seppie.jpg](http://www.buonissimo.org/images/rubriche_seppie.jpg)  
<http://www.lorologiamiope.com/wp-content/2008/10/octopus.jpg>  
[http://3.bp.blogspot.com/\\_cbUAeOcN\\_1A/SwWF0jmgYg/AAAAAAAAA8s/sbkAR5WgugA/s1600/calamari.jpg](http://3.bp.blogspot.com/_cbUAeOcN_1A/SwWF0jmgYg/AAAAAAAAA8s/sbkAR5WgugA/s1600/calamari.jpg)